

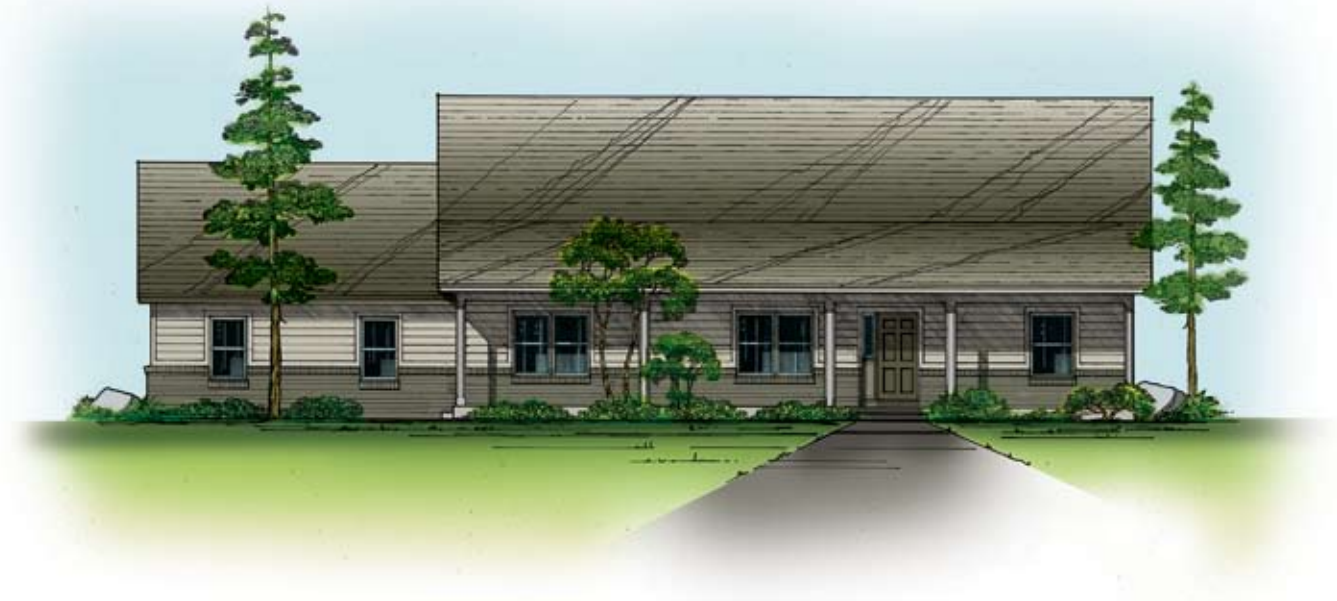


Pimlico

Great starter or retirement home! The Pimlico is a ranch style open floor plan with 3 bedrooms, 2 baths, 3-car garage, and full basement. The main living area is 1,508 sq ft.

You'll love the open great room off the kitchen & dining area, as well as a full bath off the master bedroom. The third bedroom is ideal for a home office.

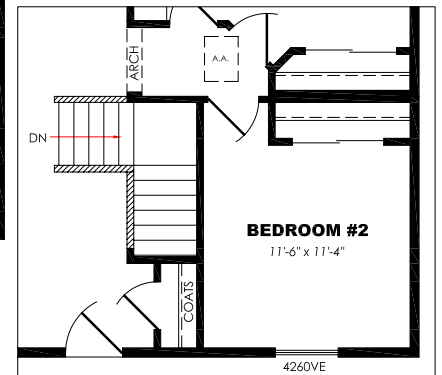
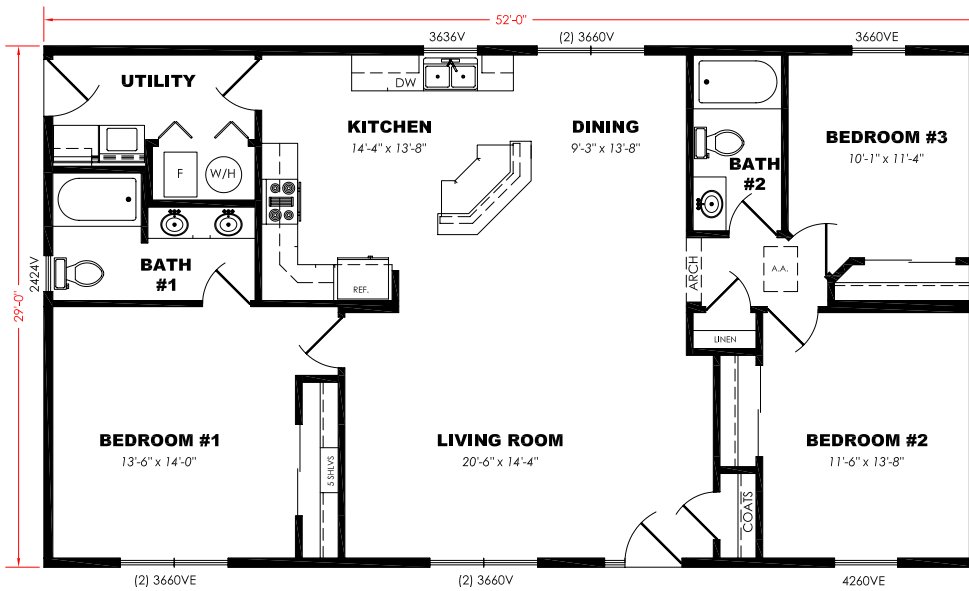
This model also has an option where a partial upper floor can be added. The addition can be unfinished, providing an excellent opportunity to increase the home's value. A perfect scenario for handy people who want to create sweat equity. Note: Rough-in for a bathroom will be in place. Option 2 not shown on plan.



Our Heritage. Your Home.



Pimlico 1,508 sq ft, 3 bedrooms, 2 baths



OPTIONAL BASEMENT CONFIGURATION

Our Heritage. Your Home.

